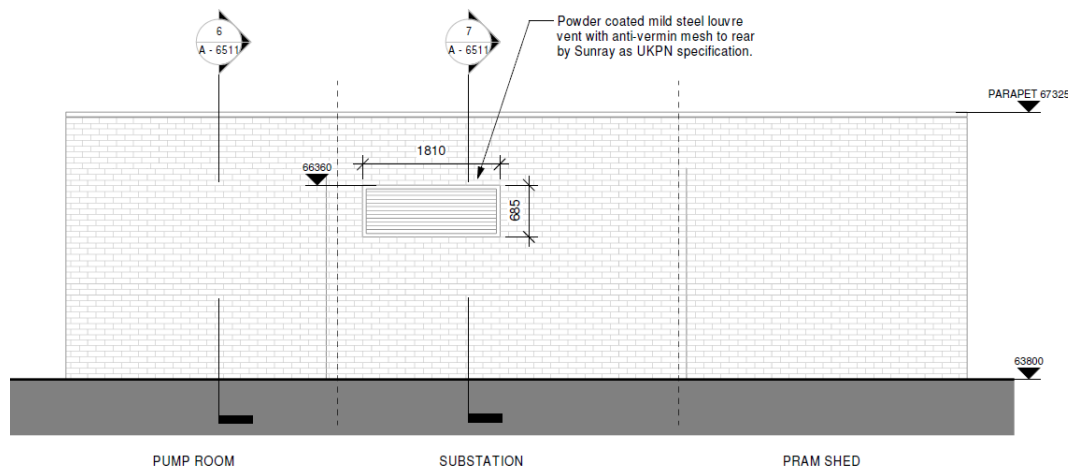
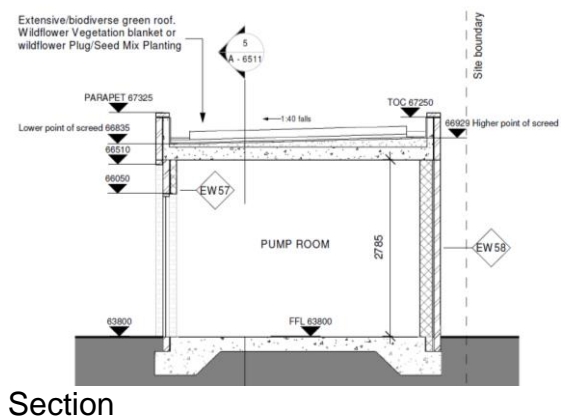
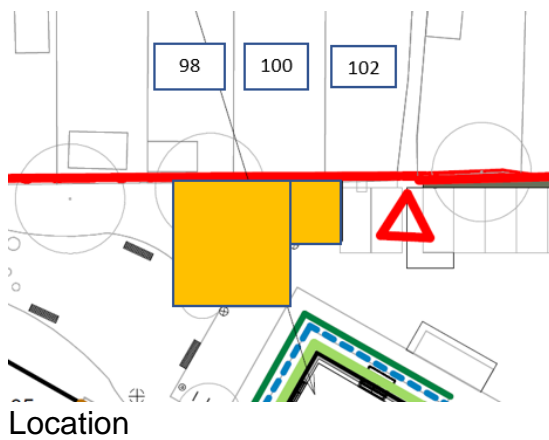


Granville Road Estate – Harpenmead Substation & Pump house

In the next couple of week’s we will commence construction of the new Substation, pump house & pram shed block to the rear of Harpenmead Point.

This single storey building will be built along the boundary with the back gardens of numbers 98, 100 and 102 Cloister Road.

Please see below plans & elevations showing this buildings location and appearance.



If you have any queries, contact John on 07760 995400

Yours faithfully

John Dale
On behalf of Mulalley & Co Ltd.